

Cor.At®-iPS CL cardiomyocytes are 100% pure, primary-like cardiomyocytes without GFP expression. The cardiomyocytes are generated from murine iPS cells and resemble a completely characterized product, including electrophysiology, gene analysis, and protein expression, being 100% comparable to the ES derived Cor.At cardiomyocytes

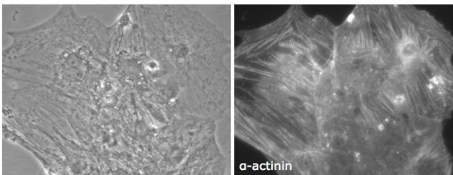
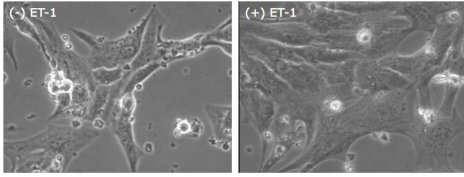


Figure 1: Pure Cor.AT-iPS CL cardiomyocytes.  
Fixed and stained with  $\alpha$ -actinin antibodies (Sigma, A7811).

Cor.At®-iPS CL cardiomyocytes are especially useful for applications using a fluorescent read-out with which GFP expressing cells would interfere. Possible methodology includes Ca-flux analysis, multi-color immune staining, high content screening (HCS), and transient transfection

Cor.At®-iPS CL cardiomyocytes are delivered with medium (100 mL or 250 mL, NA and EU serum available) and puromycin



**Figure 2: Endothelin-1 induced hypertrophic phenotype in Cor.AT-iPS CL cardiomyocytes.**  
Cells were starved for 24h, then stimulated with endothelin-1 (100nM) or left untreated for 24h.